

# Reducing Category 2 pressure sores in SAU.

Theme | Learning From Incidents

Produced by | Sharon Ingham

Case Study Date 09/10/23

## REASON WHY?

The number of people with category 2 pressure sores on SAU was high and we did not know if people were coming in with pressure sores or developing them on the unit. The team needed to review everything they were doing around pressure care to improve patient care.

## PLAN

Following a discussion with colleagues on the ward the areas that needed to be considered within this project were:  
General Education around pressure care  
How to order a pressure mattress during normal working hours  
Which paperwork needed to be completed and why  
Importance of keeping track of when to turn people.

## DO

A link to a video about the importance of pressure care was shared with staff who had to tick that they had seen it. This was followed up by regular discussions in huddles in the ward, which are still ongoing.

Education about how to fill out requests for ARJO air mattress was done to reduce reliance on the ward clerk and improve timeliness of request and delivery. We had noted that some mattresses had been broken or delivered late, however changes in the Trust process have reduced this problem.

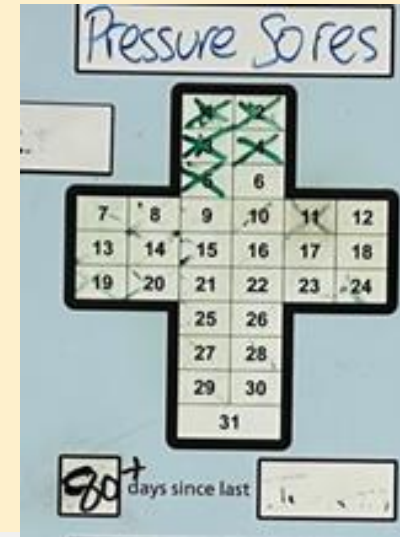
A prompt sheet was designed to show when patients needed to be turned and put on bay doors. This was initially not fully utilised, however as colleagues have increased in knowledge and confidence these have been in full use as an aide- memoire.

HCA staff are filling out repositioning charts. Education and morning checks continue on the ward.

## STUDY

Datixes about pressure care have increased. This is because we have got better at checking our patients when they are admitted and therefore, we are picking up sores that they are coming in with and then treating them, rather than not knowing about them and the sores deteriorating whilst people are in the unit.

The number of pressure sores developed whilst in SAU has significantly reduced and at the time of writing there have been over 80 days without a pressure sore on the ward. Education has continued and will do so due to staff turnover.



**AIM** | To reduce the number of category 2 pressure sores on SAU by 50% by the end of July 2023 as evidence by datix information and the quality board.

## ACT

The prompt sheets for turning will be **ADOPTED** as well as the morning discussion between the PEF nurse and the staff on at-risk patients this is also backed up by the ward manager who also does at risk patients rounds.

We need to **ADAPT** how we fill out paperwork on admission and when we assess.

## NEXT STEPS

How to ensure pressure care leaflets are given out to each patient.

Our next steps as a ward are to look at the patient's incontinence and reduce and treat moisture damage. This is a new project which look at the types of incontinence pads that we use on the ward for the patients